

GLOBAL ISSUES NETWORK

PANAGIN

INTERNATIONAL SCHOOL OF PANAMA



MARCH 9-11, 2017

EMERGING FUTURE LEADERS

FOLLOW US @PANAGIN

CONTENTS

MISSION	3
MESSAGE FROM THE GIN DIRECTORS	4
MESSAGE FROM THE ADMIN.	8
MESSAGE FROM THE DIRECTOR	10
WELCOME FROM THE CORE TEAM	13
LIST OF PARTICIPATING SCHOOLS	15
WELCOME TO THE CONFERENCE	16
KEYNOTE SPEAKERS	19
STUDENT GROUP PRESENTATIONS	25
PARTICIPANT STUDENT LIST BY SCHOOL	26
CORE TEAM AND STAFF	38
ACKNOWLEDGEMENTS	42

MISSION



To empower young people to collaborate locally, regionally, and globally in order to create project based sustainable solutions for our shared global issues.

To recognize and nurture youth empowerment.

MESSAGE

FROM THE GIN DIRECTORS

Hola! We want to warmly welcome each of you to PanaGIN!

THANK YOU:

On behalf of the Global Issues Network (GIN), we sincerely thank the International School of Panama (ISP) for hosting this student-led GIN Conference, PanaGIN.

A very special thanks to the students, our leaders of today, GIN schools and the dedicated team of GIN educator advisors. Thank you.

We would also like to extend our thanks to both regional associations, AASSA and the Tri-Association, who have long supported GIN.

THE GIN ISP STUDENT-LED PLANNING TEAM:

The GIN ISP Student- Led Planning Team has been exemplary in adeptly handling every facet of this inspiring global conference. When faced with challenges the student team worked with determination and confidence allowing them to solve every issue that arose. We owe so much to them, their GIN Advisors, and the International School of Panama community for creating this empowering and unforgettable learning experience.

GIN IS FOUNDED ON ITS BELIEF IN YOUTH: YOU

We are dedicated to supporting your amazing efforts! Your potential is limitless as is your impact. As a global community of activated global citizens, we understand that true impact is founded in empathy, trust, respect and resilience as a collaborative solution oriented team of local-global community members.

LEARNING ON ALL LEVELS:

Student Leadership is what makes these conferences empowering for everyone involved. Learning happens on all levels of a GIN Conference, from learning how to lead and plan a conference experience to activated global citizens working as GIN leaders who come prepared to share their local and sustainable projects.

GLOBAL CITIZENS CHOOSE TO EMPOWER AND ACT WITH EMPATHY:

Everyone of you has chosen to empower yourself and y/our local-global community by taking up your global citizenship. You are here to both celebrate and dive deeper into your work as leaders, as educators, as students who have committed to youth-led empathetic-action with a global impact.

TOGETHER WE:

Together we inspire and learn from one another!

Together we are addressing global issues through project-based learning and collaboration that creates meaningful and lasting solutions.

Together our impact is greater!

Let's dive in and appreciate every moment we have together!



MESSAGE FROM THE ADMIN.

Dear GIN Community,

Welcome to PANAGIN! When we gave the thumbs up to host this conference this last year we had a hope that the ingenuity and creativity of our student GIN team would produce a dynamic, innovative, and worthwhile conference. After reviewing the final agenda and reflecting on the thousand and one strategic conversations over the past year, I am confident that the students have exceeded the expectations. Frequently, in Panama, we make use of the prefix “pana” as a way to convert words.. so we have “panafriends” & “panafamily” to describe people we met here, we have “panadriving” & “panalines” to describe our frustrations with traffic, and we have “PANAMUN” and now, “PANAGIN” to describe our international conferences that we host at ISP. But pana

has meanings in other languages. In Russian it means expected and in Greek it means to be prepared. Our Venezuelan community uses pana (short for panaderia) to call a good friend. So “pana” has lots of connections to what we are doing this weekend.

In this, the PANAGIN conference, where we are celebrating emerging leaders and focusing on sustainability, we have one more meaning for pana. In this context Pana invites us all in, as in “Pan- American” or “Pan-Arab” or “Pantheon“. We welcome all of you to ISP, to Panama, and to this amazing opportunity called PANAGIN. We hope you get as much out of it, as the student organizers put in to it. Towards a better world!

Sincerely,

The High School Administration,
James Mattiace, Assistant Principal and Eric
Monson, Principal

MESSAGE FROM THE DIRECTOR

Dear GIN delegates,

It is my pleasure to extend to you all a warm welcome to Panama, to the International School of Panama, and to GIN Central America 2017. It is indeed a privilege to be hosting this prestigious conference at our school.

ISP is dedicated to educational excellence for a future without borders. On any given day that involves more than 1200 students from nearly 50 countries engaged in learning experiences that are connected, balanced and purposeful. We are eager to extend those learning opportunities to you, but also recognize that all of you from the different nations in the region provide us with the opportunity to extend this holistic approach even further. It allows for us to build upon our understandings of global issues

and address local problems, all the while building EmerGINg leaders.

This will be accomplished through the whirlwind three day schedule that awaits you: keynote speakers, small-group collaborations, NGO presentations, film festivals, field trips and student led workshops. Students are at the center of all of these experiences and, indeed, students have been at the center of all components of workshop planning. I would therefore like to extend my thanks and congratulations to the Core Team of GIN student leaders who are bringing this experience to life.

Speakers. Collaborative sessions. NGOs. Films. Trips. Workshops. All of these parts are important components of your full GIN experience. But when these parts come together they will develop a totality that is more than the sum of its parts. We are confident that this will become a formative event that will shape you as EmerGINg leaders and one that you will likely

remember all your life. Enjoy these three days. Learn from them. Move your projects forward into bold solutions that you will champion with courage, conviction and confidence.

I wish you all the very best for a wonderful and productive three days in Panama.

Warm Regards,
Rajiv Bhat
Director,

WELCOME FROM THE CORE TEAM

The PANAGIN core team would like to welcome all participants, students and advisors, to the International School of Panama's EmerG-ING Future Leaders Conference. For the past several months, we have been diligently thinking of ways to actively engage students around the theme of sustainability. With so many ways to look at this complex topic, we narrowed our focus into five sustainability pillars: humanitarian, social, cultural, educational, and environmental. Throughout the conference, we invite students to consider the following guiding questions:

- How can we design sustainable GIN projects around ensuring the essential needs of future generations?
- How do we identify and address conflicting or competing needs to ensure to sustainability?
- As our GIN projects strive towards sustain-

ability, how can we learn from the difficulties and failures we encounter?

As the conference progresses through different keynote speakers, Global Village sessions, student workshops, the NGO and crafts fair, and informal conversations, we hope that answers to these questions become clearer.

Most importantly, we hope that you take some time to make new friends, learn a few new things, and enjoy everything PANAGIN has to offer.

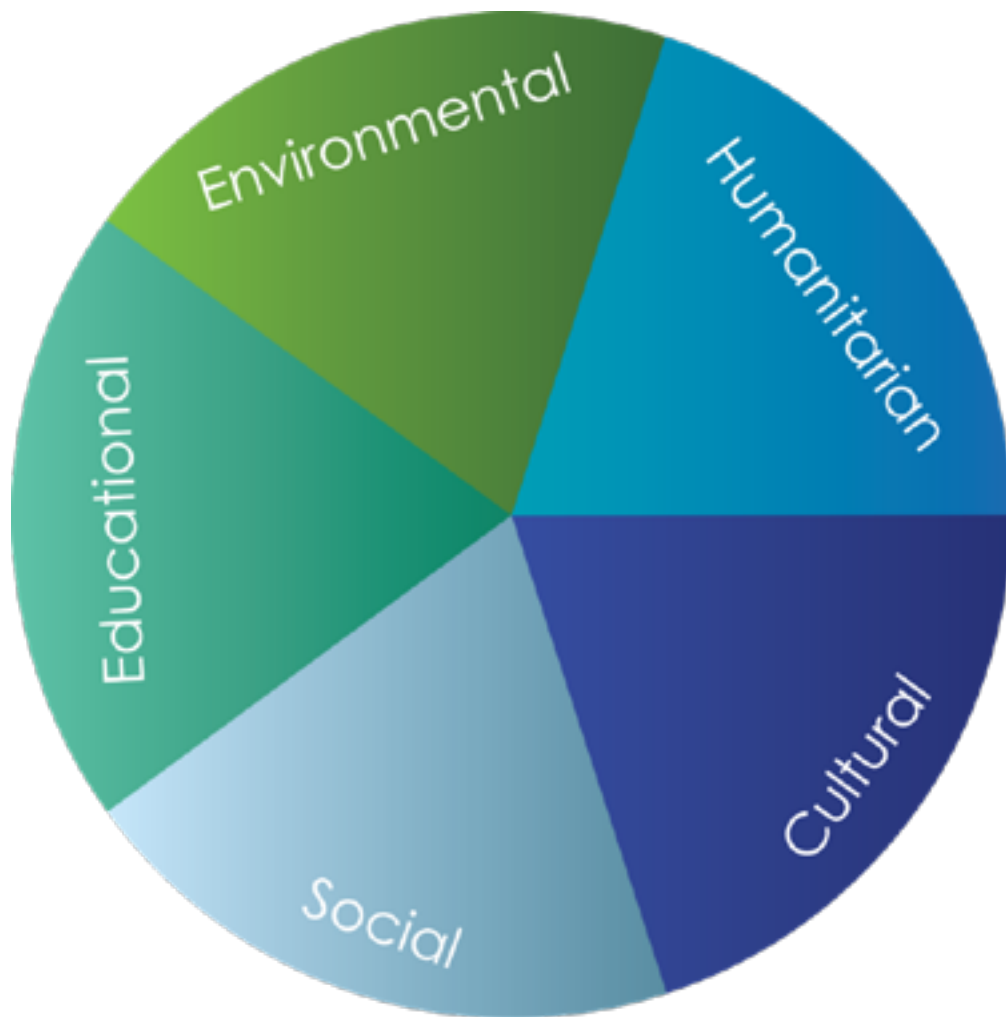
-The PANAGIN core team

LIST OF PARTICIPATING SCHOOLS

Balboa Academy
Academia Cotopaxi
American School Foundation of Guadalajara
American School of Santo Domingo
American School of Tegucigalpa
Asociacion Escuelas Lincoln
Beacon Academy
Carol Morgan School
Catherine Cook School
Colegio Americano de Turreon
Colegio Bolivar
Colegio Franklin Delano Roosevelt
Colegio Nueva Granada
Escuela Internacional Sampedrana
Instituto Italiano Enrico Fermi
International School of Curacao
International School of Port of Spain
Panamerican School
Santa Cruz Cooperative School
The American Nicaraguan School
The Columbus School

WELCOME TO THE CONFERENCE

The purpose of this conference is to inform and gather participants to engage in sustainable, effective projects that can allow us to better care for the world. Our goal is to create informed, solicitous global citizens.



Sustainability Wheel

Sustainable Education is the ability to teach the others to notice, understand, and change our surrounding for the better good. Sustainable Education at work is seen by the act of teaching the future generation the mistakes and progresses we have made.

Environmental sustainability is the balance between satisfying the human demand of the environment while keeping in consideration of the future generation. This can be seen by humans converting to renewable energy, tackling the pollution crisis, and finding renewable resource to harvest.

Being **sustainably humanitarian** incorporates aiding the human collective need like human rights and poverty. We see sustainable humanities when a project aids humans not only currently/short term like donating money but also giving them tools to progress for themselves.

Being **sustainably social** is the ability to bring humans together to share moments and experiences to better everyone's social skills and livelihood. A project that incorporates social sustainability involves people from all social classes and eliminates the differences. It is a project where we forget about the differences and bond just as humans.

Cultural sustainability ensures that our varied identities, history, traditions, and folklore live on further than our life times. Culture allows us to express ourselves and be proud of who we are not only as individuals, but as a community.

KEYNOTE SPEAKERS

Felipe Felix Mendez

Felipe Félix Méndez is a Panamanian-Uruguayan youth entrepreneur. In December 2015, Felipe founded and has since led the Panamanian Chapter of Redefy, a global youth non-governmental organization that strives to boldly defy stereotypes, as a means to harness tolerance and social justice. He was the keynote speaker for the most recent TEDxYouth@ISP event, where he addressed the importance of youth engagement in global issues in his talk titled “Sentándose en la mesa de los adultos.” A firm believer in dialogue, Felipe has dedicated the past 4 years of his life engaging in thoughtful discussions in the context of Model United Nations, Model Organization of American States, and other forms of debate simulations, participating and organizing about 15 of these and obtaining several distinctions. His belief that giving the youth a seat at the “grown-up” table is the first step towards actually solving issues led him to found the MUN/Debate Team during his first week at ISP, which has provided an opportunity for other students to learn about global issues. Through MUN, he became the first-ever President of the General Assembly of the Panama Model United Nations XXIV, the oldest and largest MUN simulation in Central America. Felipe is excited to motivate the participants to speak up and provide his experience as a tool to build a sustainable future.



Keyes Christopher Hardin

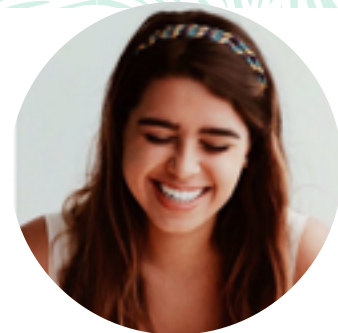
Keyes Christopher “KC” Hardin is co-founder and CEO of Conservatorio SA, a company leading the revitalization of a seafront UNESCO World Heritage Site in Panama City. Conservatorio was winner of Travel & Leisure Magazine’s Global Vision Award for its holistic approach to urban revitalization, which includes developing hotels, condominiums, affordable housing and social projects. KC also co-founder of Esperanza San Felipe, a gang intervention and integration program in the historic district.



Prior to moving to Panama, KC was a corporate lawyer in New York and Tokyo with Paul, Weiss, Rifkind, Wharton & Garrison where he focused primarily on mergers and acquisitions and private equity. He holds a JD from Fordham University School of Law and a B.S. in Communications from the University of Miami.

He is a Fellow of the Aspen Institute’s Central America Leadership Initiative and a Research Associate at MIT’s Community Innovators Laboratory where he is developing a private enterprise-academic partnership to validate a business model for sustainable urban revitalization in developing world inner cities.

Claudia Ameijeiras



Since 7th grade, Claudia has looked for ways to improve the lives of children in small but meaningful ways, starting with a community service club, which she created and which made the wishes of five children with Cancer come true. In 9th grade, she worked with an organization in Thailand called Duang Prateep Foundation, creating global awareness in toddlers to whom she taught English, and with teenagers living in slums with whom she participated in an exchange of what it is like to be a teenager in other parts of the world. In 10th grade, she worked with a girl's club in Zambia, in which she worked with orphans and sexual assault victims that have unprecedented determination to finish school. Here, she had discussions with the girls about the different barriers to education that the girls had to overcome and the different ways in which they could overcome it. In this same year, Claudia taught English in local schools in Malawi, Zimbabwe, and South Africa, which developed into an incredible experience of global citizenship, camaraderie, and empathy. Continuing her journey, Claudia decided to focus on the children of her own community and worked with the Make A Wish Foundation to continue making the wishes of children with terminal diseases come true through various organizations, including Luces Panama and Calicanto. As a result of these experiences, Claudia has gained valuable insight and perseverance regarding how to overcome unexpected obstacles when helping others, as well as learning key factors that make a project valuable and sustainable.

Bruno Massote

Bruno Massote is Currently the regional marketing manager at Hilti Latin America and recently moving to Panama, Bruno has developed his career in multinational companies in the steel, packaging, recycling, and power tools industries. In 2010, he was given the challenge of starting up and further developing the Brazilian branch of TerraCycle Inc., which is a US-based company that creates end-of-life (cradle-to-cradle) solutions for a wide range of hard-to-recycle waste streams around the world, such as used sponges to toothbrushes. As the General Manager, Bruno managed to engage almost 1 million people to collect different waste stream across the country, making him passionate and actively involved with waste management issues ever since. Bruno holds a B.S. in Industrial Engineering and a MSc in Innovation Management with a focus on sustainability, which led to various invitations to publish articles and teach the subject at business schools in Brazil. His MSc dissertation assessed the recently launched Solid Waste Management Public Policy in Brazil, comparing its potential impact with the well-established European policies, creating a series of recommendations that could enhance the outcomes expected after its implementation. He also co-founded Descolai.com in 2011, an online platform that pioneered the collaborative consumption concept in Brazil, which attracted not only thousands of users but also significant media attention due to the innovative concept that was then introduced in the country.



Michelle Khafif

After graduating from the University of Texas and Austin with a major in marketing and advertisement and a minor in social anthropology, psychology and sociology.

Michelle's constant mission to highlight Panamanian identity through products and promote local consumption, Michelle is the head of Creado en Panama, Panama's community-based platform, connecting and advising the creative industry – Not to mention she is also the engine of the Super Mini Diablo Rosso, which brings together under one roof more than 100 local hand-made brands of creators and artists, thus becoming the showcase of national talent. She also works with Integrate, a project whose purpose is to help women in prison reintegrate into society through art.



Rob Getman

I am Rob Getman. I received my BS in Civil Engineering from the University of Texas at Austin and then went on to work for three years for the Los Angeles County Department of Public Works in three divisions. First the Environmental Programs Division, then the Transportation Design Division and then the Structural Design Division. While working for LA County I received my license to work as a Professional Engineer (PE) in California. I then worked for two years with Psomas, a private land development firm.

In 2007 I moved to Panama and began working for Telecom Internacional where we design and install Special Systems for new construction. In 2014 I passed the LEED GA exam hoping to pursue LEED building projects. In 2016 I approached the Ministry of the Environment with a propos-



al to help reduce the amount of litter that enters the oceans from the rivers of Panama. This Project is why I was asked to participate in the GIN conference. I have currently submitted my proposal to the Ministra of Mi Ambiente and I am waiting for a response.



Paola Gomez

A proud I.S.P alum, Paola is co-founder of Hecha y Derecha, a social Enterprise with the purpose of empowering women through microcredit loans. She is part of the diplomatic body of Panama and assistant to the Vice-president and Minister of Foreign Affairs. Paola is Passionate about cultures, diversity and their effect on our identity and our way to see the world. In the past she has been the Chief of International Cooperation in the Panamanian Institute of Culture, bringing opportunities for Panamanian artists here and abroad; directed an NGO called Tu Panamá Te Necesita, that used social media to have a positive impact on the values of the Panamanian society; and worked with women from indigenous communities in the Darien jungle creating a value chain that reached international markets, she is also a life coach. In 2014, she was part of Pananueva, where she travelled in a bus through Central America with filmmakers from Europe in order to make a documentary about the reality of the youth in the region. Whichever the job she always looks for a way to impact in culture, development, and youth and women empowerment in order to reach their full potential. Paola is a Global Shaper from the Panama City Hub. This is the World Economic Forum's youngest community.

STUDENT GROUP PRESENTATIONS

[Workshop Session #1](#)

[Workshop Session #2](#)

[Workshop Session #3](#)

[Workshop Session #4](#)

[Workshop Session #5](#)

[Workshop Session #6](#)

PARTICIPANT STUDENT LIST BY SCHOOL

Academia Cotopaxi

Isabel Ileana Escobar Esca
Noemi Laverne Delorey
Nicole Ruf
Juanita Sandoval Ortiz
Angela Sanchez Saavedra
Isabella Catanzaro Egan
Valeria pedrozo
Isabella Mino Paulyna
Emilio Julian Patino Guevara
Elias Nmeir Mrad
Josue David Arostegui Ortiz
Alejandro Joaquin Cardenas Caicedo
Andrea Stadler
Doug Catanzaro

American School Foundation of Guadalajara

Maria Uralde
Olivia McGrath
Ana Paula Rivera
Natalia Aceves
Magnolia Lemmon
Sofia Marigliano
Elfriede Suarez
Avril Alzate

Natalie Martinez
Ioana Rosu
Abigail Salazar

American School of Santo Domingo

Ricardo Despradel
Thiago Burgos
Daniela Contreras
Vicky Privert
Luis Serrano
Brian Cordero
Wara Gonzalez
Ambar Casals
Enrique Despradel

American School of Tegucigalpa

Paulina Cantero
Valeria Raudales
Anelisa Toledo
Adriana Mayr
Elizabeth Clare
Isabella Creamer
Zarina Aguilar
Elena Rheinboldt
Lucrecia Sofia Retes Foster
Paula Fernanda Vesely Paz
Carolina Maria Agurcia Aguero
Irene Chinchilla Mejia
Chiara Niehorster
Luciana Sofia Morazan
Graciela Maria Facussé

Andrea Hilsaca Fernández
Sarah Gabriela Valladares Cardona
Vera Fabiana de la Soledad Facussé Paz
Maricé Errázuriz
Karen Hesse Joya

Asociacion Escuelas Lincoln

Sumin Lee
YeonHee Oh
Amy Bee
Artemisa Garcia
George Jones
Tea Baines
Michelle Joos
Ethel Rivera
Brianna Platt
Elena Maneffa
Luiza Eboli
Bianca Tojeiro
Astrid Caceres
Veronica Bradham
Sarah Waldron

Balboa Academy

Gabriela Franco
Valeria Caballero
Mariana Navarrete
Muskaan Pathak
Isabella D'Agord
Jimena Lestani
Maria Paula Gutierrez

Andres Mendoza
Daniela Navarrete
Ana Laura Sanchez
Irene Cañas
Matthew Henriquez
Lisa Mae Paris
Rebecca Estevez
Santiago Donado
Giuliana Claus
Victoria Fabrega
Natalia Chapman
Guillermo Archilla
German Arrocha
Camila Brostella
Samantha Andrade
Diana Aguilar
Olivia Arana
Christina Avila
Barbara Labbate
Jenny Lee
Alix de Mendoza
Melissa Royo
Ray Durbin
Lillian Hanson
Annelise Goldman
Daniel Rudnick

Beacon Academy

Lillian Hanson
Annelise Goldman
Daniel Rudnick

Carol Morgan School

Guillermo Archilla
Carola Maglione
Camila Pozo
Vera Leon
Sebastian Licairac
Carlotta Azar
Viana Moreno
Sebastian Carbonell
Avery Dille
Janie Chang
Analia DenmonAlix de Mendoza
Melissa Royo
Ray Durbin
Lillian Hanson
Annelise Goldman
Daniel Rudnick

Catherine Cook School

Emily Pencyla
Lily Harris
Eloise Barnett
Surya Newa
Claire McHugh
Shea Moroney
William Clancy
Sarah Douglas
Isabel Kaufman
Reese Wilson
Evan Sill

Francesca Turrinelli
Max Wilkins
Emily Sands
Jack Neis
Lara Kossiakoff
Elizabeth Niketopoulos
Emily Malette
Cory Stutts

Colegio Americano de Torreon

Sofía Araiza Lozano
Ana Sofía Reina Aguirre
Sebastián Garza
Judith Puente
Luis de la Rosa Rodríguez
Gabriela Aguirre Rascón

Colegio Bolivar

Clara Andrade Yus
Isabel Carmona Villegas
Gabriella Duque Lopez
Anika Robinson Hoyos
Sara Solorzano Puente
Emma Velasquez Mariucci
Sofia Lloreda Toledo
Martín Perez López
Juanita Hernández Gonzalez
Mariana Reyes Holguín
Juliana Rodriguez Jimenez
Jessica Gómez

Colegio Franklin Delano Roosevelt

Alejandra Escobar

Alexandra Farina

Domenica Ferreyros

Ainoha Siucho

Francesco Mufarech

Miguel Ucceli

Marcelo Makhlof

Isabella Planas

Leticia Mondada

Fabio Brasil

Sebastian Koskinen

Diego Torres

Luis de la Luz

Miranda Wu

Ines Fort

Daniella Ribaudó

Nicole Williams

Rafaella Velasquez

Ignacio Bustamate

Igancio Rey de Castro

Salvador Espejo

Guillermo Paredes

Malvina Dasso

Mara Farina

Gabriel de Romana

Christine Morrissey

Emily Raasch

Paul Ducharme

Colegio Nueva Granada

Isabel Merel

Dominique Pearl
Camila Uribe
Isabela Aragon
Laura Patarroyo
Mertixell Ortodo
Tania Grimberg
Christopher Milbert
Brian O'Connor
Marcela Campos

Escuela Internacional Sampedrana

Antonella Membrano
Esteban Larach
Jesus Dabdoub
Marianne Larach
Emiliano Garza
Ana Villeda
Marian Hawitt
Valeria Illescas
Oscar Carrion
Eduardo Fernandez
Gabriela Canahuati
Cristina Mejia
Victor Giacoman
Camilo Kafati
Marielle Villela
Cristina Ouzande
Valentina Giacoman
Victoria Otero
Sarah Downing
Alyssa Tinoco
Tricia Matuty

Yasmine Piechotka
Eva Bizzari
Beatriz Diaz
Ayda Giacoman
Anais Abufele
Kristiane Larach
Esther Canales
Jessica Fuschich
Elvia Isabel Lopez
Cathleen Carpenter
Saiswari Virahsammy
Iris Taborda Paz de Mejia
Aubrey Webster

Instituto Italiano Enrico Fermi

Sabrina Izaguirre
Leonardo Rodríguez
Alfonso Vergara
María Teresa Rodríguez
María Andrea Rodríguez
Daniela Caliva
Alejandra Maria Castillo
Anna Cermelli

International School of Curacao

Ploy Nakkam
Nathalia Bencomo
Sue Lin Lam
Jaycee Jones
Sahil Mirchandani
Shreyaa Samtani

Namrata Ganwani
Kishan Thakurani
Benjamin Smith
Kavita Chugani
Ulises Franco

International School of Port of Spain

Jennifer Haidar
Annalies Chan
Jean Charles Patterson
Victoria George
Shival Maharaj
Bridget Als
Rebecca Tompsett
George Leiter

Panamerican School

Alejandro de Vega

Santa Cruz Cooperative School

Pilar Martinez
Paulina Marinkovic
Adriana Salome
Valentina Chahin
Tamara Pereyra
Diana Alarcon
Isabella Roda
Gabriel Rosas
Raul Valle
Tomas Yeatts
Jose Carlos Paz
Teo Eid

Maria Laura Castedo
Maria Julia Castedo
Marco Gonzalez-Quint
Andrea Barrios
Diego Barrios
Nicole Quiles
Flavia Rodas
Sofia Meador
Juliana Salvatierra
Esteban Krutzfeldt
Thomas Ward
Viviana Castaneda
Hudson Thurston
Getulio Brasil

The American Nicaraguan School

Gabriella Lanzas
Guillermo Maltes
Eduardo Galo
Mauricio Pierson
Marcella Martinez
Daniela Garcia
Armel Gonzalez
Maria Elisa Ramirez
Santiago Perez
Melissa Maltes
Clarisa Barrios
Martina Rosales
Henry Del Carmen
Andres Galvis
Andrea Arguello

Hanadi Abu Ali
Junie Vargas
Adam Smith
Kates Wilke

The Columbus School

Andrea Fernandez
Manuela Betancourt
Maria Londoño
Salome Beyer
Andrea Cardona
Juan Manuel Rodriguez
Felipe Hoyos
Daniel Meneses
Laura Ramirez
Maria Pia Molina
Sofia Vasquez
Paloma Urrea
Alejandro Escobar
Tomas Ortiz
Maria Cuartas
Daniel Zuloaga
Elena Echavarria
Juan Jose Ramirez
Jose Vega
Britta McCarthy
Luz Miriam Arango

CORE TEAM AND STAFF

Conference Program

Almeijeiras, Claudia
Cardenas, Sofia
Castro, Elena
Cody, Orhan
Esquenazi, Roberto
Fernandez, Sara
Fraija, Nicole
Lindley, Andrea
Proano, Martina
Rodriguez, Gisela
Royo, Martina
Usberti, Leticia
Vivone, Lara
Lugo, Gabriela
Donini, Stella
Aguayo, Daniela

Budget

Arguindegui, Gaston
Bran, Nicolas
Chung, Federico
Salama, Gassan
Rojas, Luis Miguel
Cucalon, Paulina

Roldan, Daniel
Lee, Jae
Juarez, Luis

Tech and Communications

Rangel, Sofia
Caballero, Milena
Lopez, Austin
D'amato, Gian Carlo
Tovar, Gabriela
Marquez, Maria Paula
Tupper, Juliana
Salama, Dalia
Uzcategui, Daniella
Lopez, Melanie

External Logistics

Barbosa, Alexandre
Beltran, Andrea
Ivanturi ,Vivek
Labarca, Sofia
Seo Juneyoung
Subero, Luisa
Wang, Weisen

Student Leadership

Amaro, Naty
Rivas, Rebeca
Rangel, Samy
Palis, Yussef
Lopez, Melanie

Hodes, Gigi
Lanza, Nathalie
Boyd, Stefanie
Arciniega, Anelle
Hunter, Hannah
Hunter, Kate
Alzate, Samuel
Montego, Santiago
Amaro, Luis
Soto, Nico
Rosas, Sara
Quihillalt, Ines
Garcia, Mariana
Saldivia, Samy
Solis, Sofi
Heemrajani, Rashmi
Hilaire, Alexandra
Livne, Maya
Bello, Keisy
Di Girolamo, Gianni
Navarro, Mercedes
Ibarreche, Estibalitz
Gomez, Miguel
Cucalon, Paty
Vivas, Victoria
Seixas, Ana
Baquero, Maria
Pecile, Stefano
Corfitsen, Clara
Deustch, Natalia
Salama, Dalia
Beltran, Andrea

Yaafar, Ahmad
Marquez, Maripau
Monterola, Paloma
Yanes, Mimi
Vico, Tomer
Eleta, Tomas
Tarazona, Ana Luisa
Prado, Mariana
Cajiga, Valeria
Astofi, Isa
Balani, Mihir
Muñoz, Maria
Uzcategui, Daniela
Nelson, Paige
Sherman, Alexandra
Harten, Enrique
Grace Angel, Ana

ACKNOWLEDGEMENTS

The 2017 PANAGIN Conference could not have been possible without the interest, help, attention, and care of so many people. Please know that the following list is not entirely comprehensive of all of the support we have received, but we have tried to include as many groups of people as possible.

First, we would like to thank the Global Issues Network for trusting the PANAGIN core team to host their spring 2017 conference.

Second, we would like to thank The International School of Panama for their cooperation and their enthusiasm in hosting this conference. ISP administration teams, office staff, IT department, maintenance department, cafeteria staff, Visual and Performing Arts center team, teachers, and students, have all been extremely helpful in working together to make this conference successful. In particular, we would like to acknowledge Mr. Rajiv Bhat, Mr.

Eric Monson, Mr. James Mattiace, Mr. Adam Herzig, Ms. Rosie Aguilar, Mr. Jim Stratton, and Mr. Luis C. Arias.

Furthermore, we would like to thank our amazing group of students from each committee for their hard work and dedication during this year. Throughout all aspects of this conference – brainstorming, planning, organizing, refining big ideas, problem solving, last minute preparations, and so forth – this group of talented students remained committed and focused on making this a positive experience for all involved. This conference would not be possible without the dedication and talents of our Global Village Leaders, Ambassadors, Carbon Team, Tech Team, and the Conference Program Committee. Thanks specifically to Gaston Arguidengui, Pavan Balani, Nico Bran, Milena Caballero, Elena Castro, Orhan Cody, Andrea Donayre, Rashmi Hemrajani, Maya Livne, Austin Lopez, Sebastian Montenegro, Sofia Rangel, and Luisa Subero.

This conference could also never have been possible without the work of our teacher advisors, Nash Adamson, Ricardo Avelar, Maia Dean, Andrea Marchosky, who have truly devoted so many hours far beyond their regular teaching assignments to make this conference as great as it is.

We would like to acknowledge our Keynote Speakers, Felipe Felix, Paola Gomez, Claudia Almeijeiras, Michelle Khafif, Bruno Massote, Robert Getman, and KC Hardin; thank you for making time in your busy schedules to share your expertise. We appreciate the many individuals and organizations that participated in the NGO and Arts/Crafts fair. In addition, thank you to Canal Movers for their donation of the wooden palettes, which decorated our stage and Haus for funding our beautiful name tags.

Last, we would like to warmly thank our visiting students and advisors. Without your efforts, projects, and attendance, there would be no

conference. It is your hard work and passion that makes all of our efforts worthwhile.

